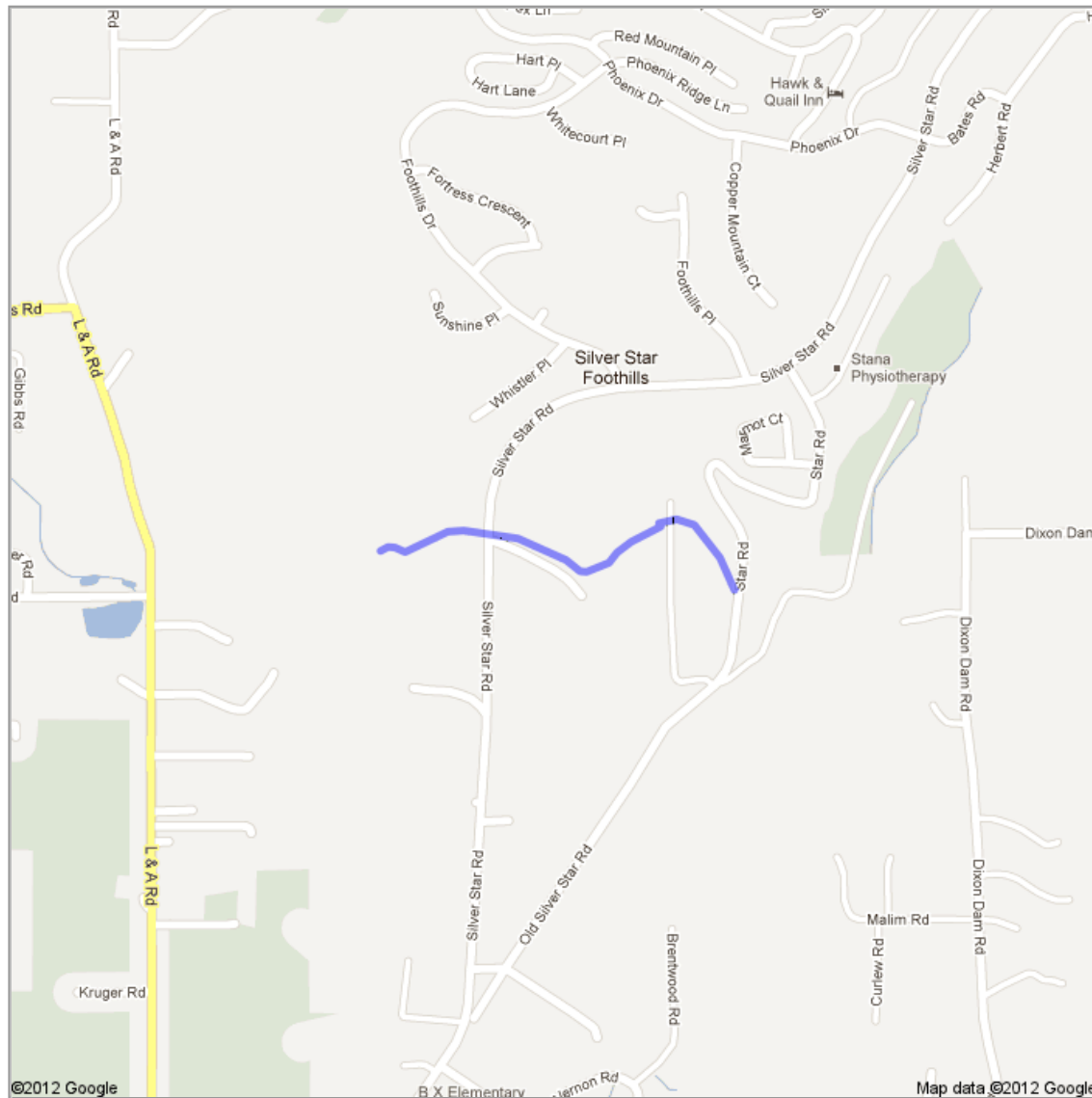




Grey Canal Trail, Silver Star Foothills
Star Road - Blackcomb Way



Grey Canal Trail - Star Road to Blackcomb Way

Approximately 800 meters in length, this easy, gravel trail runs between Grey Canal parking lots off Star Road and off Blackcomb Way. At Blackcomb Way the Grey Canal continues north and west with two options that form a loop (see map on this website). Slightly south of this trailhead there is parking to access another section of Grey Canal Trail as well as the BX Creek Trail.

Unlisted · 0 views
Created on Apr 21 · By [Hiker Harold](#) · Updated < 1 minute ago

 ACTIVE LOG